

HOW TO USE

- DO NOT apply to if frosts are expected.

Situation	Disease	Rate	How to Apply	
BEANS	Rust, Anthracnose	Mix 20g per 10L of water	Spray at first sign of disease. Repeat at 7-10 day intervals while the risk of disease exists.	
CABBAGE, CAULIFLOWER, BROCCOLI, BRUSSELS SPROUTS	Anthracnose, Downy Mildew			
CARROTS	Leaf Spot			
CARNATIONS, GERANIUMS, HOLLYHOCKS, SNAPDRAGONS, CHRYSANTHEMUMS, GLADIOLI	Rust			
PUMPKINS, MELONS, CUCUMBER, CANTALOUPE, ZUCCHINI, SQUASH	Anthracnose, Downy Mildew			
LETTUCE				
MANGOES	Anthracnose			Spray at weekly intervals during flowering then monthly until near harvest.
ONION	Downy Mildew, Purple Blotch			Spray at first sign of disease. Repeat at 7-10 day intervals while the risk of disease exists. DO NOT apply to Tomato seedlings before transplanting.
POME FRUIT: (Apples & Pears)	Black Spot			
ROSES				
TOMATO	Leaf Blight			
TURF	Brown Patch, Helminthosporium Algae	Mix 15g per 10L of water	Apply 10L of mix per 10 square metres of Turf. Repeat every 10 days when disease is present.	

NOT TO BE USED FOR ANY PURPOSE OR IN ANY MANNER CONTRARY TO THIS LABEL UNLESS AUTHORISED. DO NOT PICK CARROTS, BROCCOLI, CUCUMBER, CANTALOUPE, PUMPKINS, MELONS, ZUCCHINI, SQUASH, POTATOES, CABBAGE, CAULIFLOWER, BRUSSELS SPROUTS, ONIONS, BEANS, FOR 7 DAYS AFTER SPRAYING. DO NOT PICK APPLES, PEARS, TOMATOES, LETTUCE, MANGOES FOR 14 DAYS AFTER SPRAYING.

Batch No.:

Expiry Date:

Searles®

MANCOZEB
Fungicide

HOW TO PREPARE:

Product can be applied through most garden sprayers. Add about half the required volume of water to the sprayer and then add the product. Mix or agitate and then add the remaining water. Regular agitation during spraying is necessary to avoid product settling out. Do not store mixed product. Only mix what you can use immediately. Thoroughly cover plants with spray ensuring all leaves are wetted. Avoid excessive runoff.

CAUTION:

Dangerous to fish. DO NOT allow chemical containers or sprays to get into drains, sewers, streams or ponds. DO NOT feed grass clippings from treated areas to poultry or animals.

STORAGE AND DISPOSAL:

Store in the closed, original container in a cool, dry place out of the reach of children. Do not store in direct sunlight. Dispose of empty container by wrapping in paper, placing in plastic bag and putting in garbage.

SAFETY DIRECTIONS:

May irritate the eyes, nose, throat and skin. Avoid contact with eyes and skin. DO NOT inhale dust or spray mist. Wash hands after use.

Searles®

MANCOZEB
Fungicide

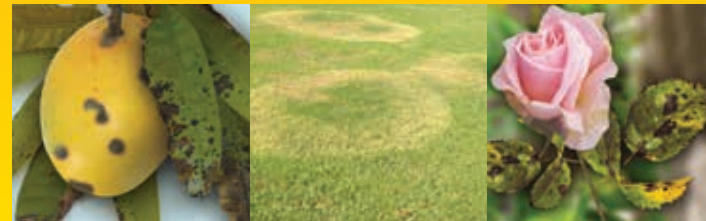
CAUTION

KEEP OUT OF REACH OF CHILDREN
READ SAFETY DIRECTIONS BEFORE OPENING OR USING

Searles®

MANCOZEB

Fungicide



ACTIVE CONSTITUENT:
750g/Kg MANCOZEB

**For control of various Fungal Diseases
on some Fruit and Vegetables,
Flowers and Shrubs in the home garden.**

Net Contents: 200g



This cardboard carton is recyclable,
biodegradable and compostable.

Searles®

MANCOZEB
Fungicide

FIRST AID:

If poisoning occurs, contact a Doctor or Poisons Information Centre (Phone 131126). Avoid giving alcohol.

J.C. & A.T. Searle Pty. Ltd.
4914 D'Aguilar Highway,
KILCOY, QLD. 4515
PH: (07) 5422 3000
www.searlesgardening.com.au

NRA Approval No. 55446/0802

BARCODE
9315138007632
mag factor 0.90